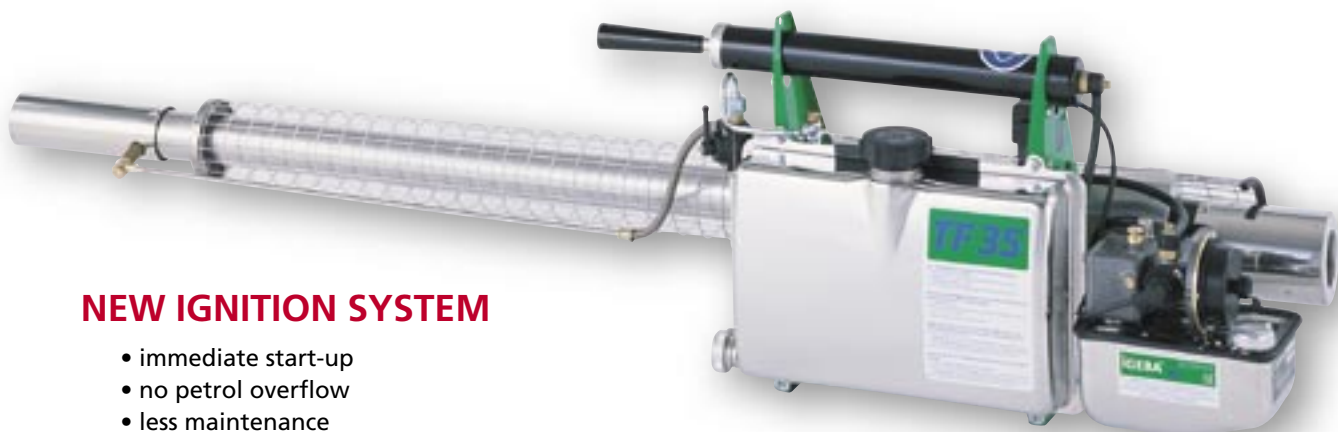


Thermal Fog Generators



NEW IGNITION SYSTEM

- immediate start-up
- no petrol overflow
- less maintenance



characteristics

When we set out with the firm intention of producing the best equipment on the market, we had the advantage enjoyed by every new company: **there were no technical limits imposed by an existing range of models!**

This unit has been designed for use with insecticides, acaricides and fungicides (mostly wettable powders) which are **soluble in oil or water!** Light weight for convenient use in areas where poor roads and tracks make it difficult to handle heavy equipment. The only massproduced unit with air intake valve covered, providing a **silencer effect and protection against dust and solution particles.**

- **Petrol tank** made from stainless steel
- **Fog tube** made from stainless steel
- **Formulation tank** made from stainless steel
- **Cooling jacket** made from enamelling sheet

All other parts getting in contact with the chemicals are made from **brass, Viton or Teflon.**

Emergency cut-off device for solution available upon request.

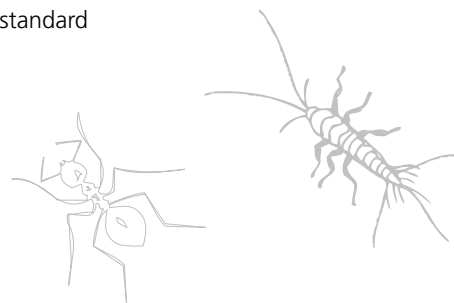


technical specifications

Weight in kg, empty but ready for use	7,9 kg
Dimensions L x W x H in cm	137,5 x 27 x 34
Solution tank capacity in l	5,7* o 10
Fuel consumption, approx. in l/h	2,0
Performance of combustion chamber in KW/HP	18,7/25,4
Maximum flow rate, approx. in l/h	40
Effective horizontal reach, indoors, approx. in m	
- oil based formulations	150
- water and carrier i.e. "NEBOL"	42
Power supply (Flashlight batteries)	4 x 1,5 V LR20 (LR6 opción)

Considering the maximum flow rate, an operator can treat at a flow rate of 1 litre/2.500 m³ up to 105.000 m³/h or 3.708.000 ft³/h.

*standard



IGEBA Geraetebau GmbH

P.O. Box 6, D-87478 Weitnau/Germany

☎ [0]8375/9200-0

☎ [0]8375/9200-22

✉ info@igeba.de

www.igeba.de

